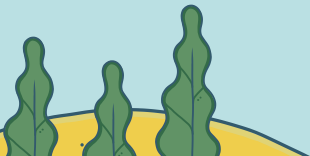


MOR and FWP Summer Reading Trunk Unboxing Webinar

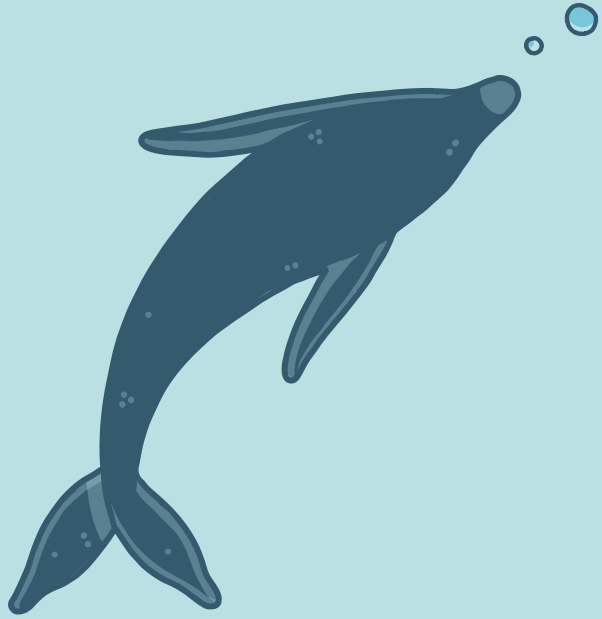
Ashley Hall, Museum of the Rockies
Jessi Gudgel, Fish, Wildlife, and Parks
Amelea Kim, Montana State Library



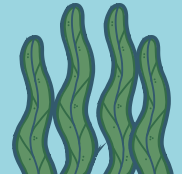
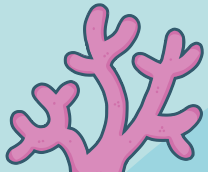
May 6th, 2022



Before We Start...

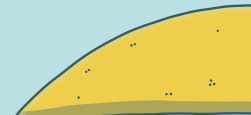
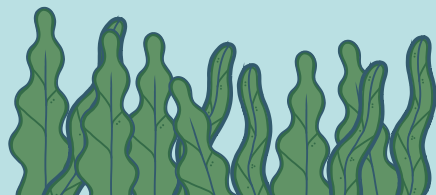
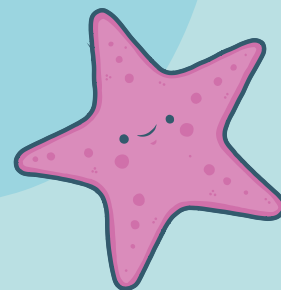
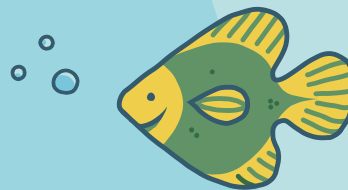


- Chat box available
- OPI credit available for live attendance
- MSL credit available through ASPeN
- Recording posted to Vimeo



Agenda

- History of MSL, MOR, and FWP Partnership on Summer Reading Trunks
- What's in the Trunk?
 - Activity 1: Gyotaku Fish Prints
 - Activity 2: Fish Game/Obstacle Course
 - Activity 3: Water of the World
 - Activity 4: Extant or Extinct?
- Overview of Trunk Request Form
- Questions?



MSL, MOR, FWP Partnership!

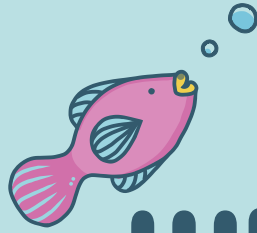
MOR

- Most visited museum in Montana!
- Division of MSU, and a 501c3 nonprofit
- Outreach and educational materials in paleontology, astronomy, Yellowstone, and Indian Education for All

FWP

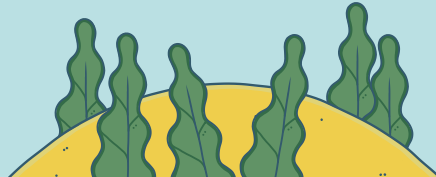
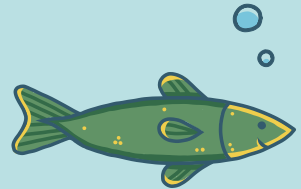
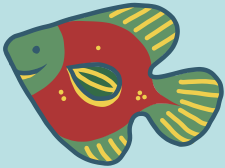
- Provides stewardship of fish, wildlife, parks, and recreational resources of Montana
- Montana WILD provides educational programs, outreach, and resources to those who want to learn about Montana's natural resources!

- Collaboration started in 2012
- Providing themed trunks to libraries with activities and curriculum
- FWP is a new partner this year!



What's IN the Trunk?

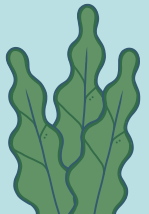
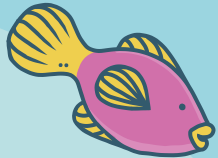
Curriculum Guide
4 activities
Supplemental Books



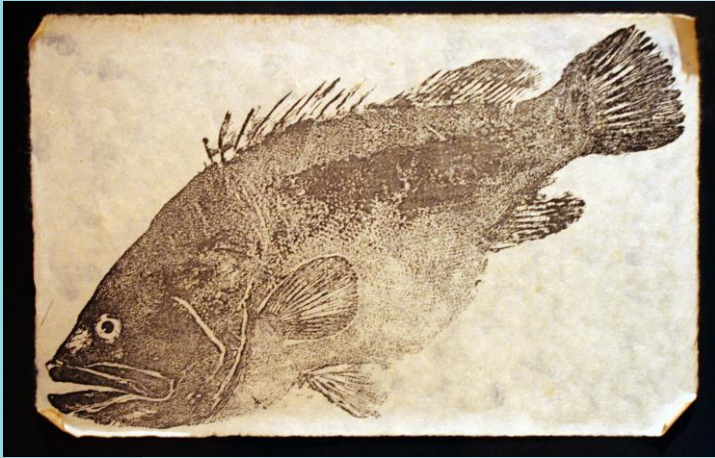
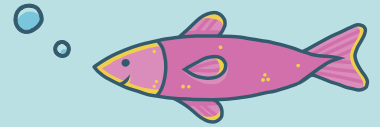


CSLP 2022: Oceans of Possibilities

Trunk Theme: Montana's aquatic life
from past and present



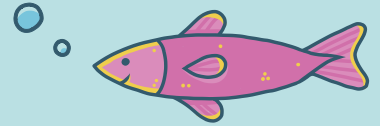
Activity 1: Gyotaku Fish Prints



Japanese tradition of recording impressive catches at sea!

- Spread a thin layer of paint over your fish
- Carefully lay your paper/fabric/surface over the fish
- PRESS (don't rub) on your surface to transfer the fish image!



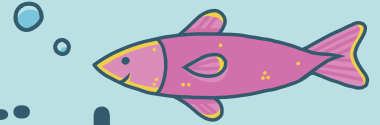


Supplies Provided

- Brushes
- Rice Paper (limited amount)
- Speedball Paint
- Rubber fish

You will need to provide:

- Workspace area
- One or two wash bins and a scrub brush
- Towels for drying
- Paint container (paper plates, etc)



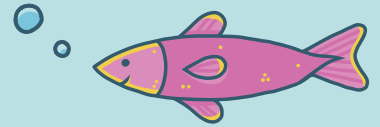
Activity 2: Fish Obstacle Course



You are a fish in the wild – can you survive a whole year?

- Find a space to put the obstacle course (there are 20 stations in the template PowerPoint)
- Read through all slides – what do you want to change? What do you want to add?
- Make sure the space numbers match up!
- Could work as a passive or active program

○ Photo by [Brandon](#) on [Unsplash](#)

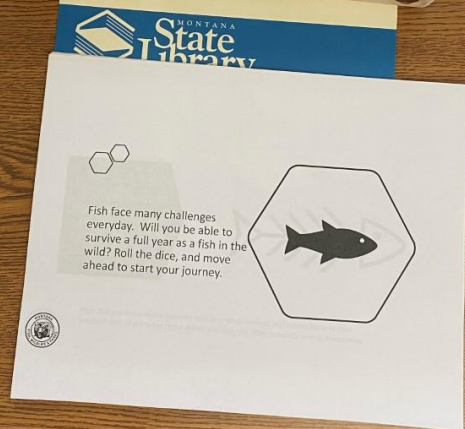


Supplies Provided

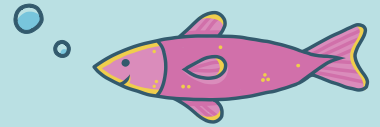
- Large wooden dice, for large group playing
- Hard copy of the PowerPoint slides, for previewing

You will need to:

- Provide small dice, if you want many groups of people playing
- Provide any additional materials, depending on your station activities
- Print out, and tape up your edited slides



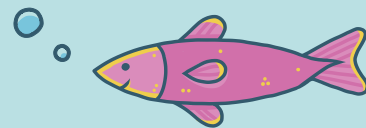
Activity 3: Water of the World



○ Photo by [Stephen Pedersen](#)
○ on [Unsplash](#)

Learn about the different types of water in the world, and how it's distributed!

- Brainstorm: Where does water come from? Where is it in the world? What types of water sources do you know?
- Identify the 6 categories of water, and label each container
- Estimate: How much of the earth is water? Use the globe to take samples, and find the ratio
- Order: Which container will hold the most water?
- Discuss: How much water does Montana have? What water is usable/unusable?



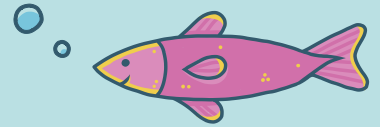
Supplies Provided

- Soft globe
- Measuring tools
- Blue Dye

You will need to:

- Provide water (if using)
- Have a whiteboard/large memo pad
- 7 to 9 clear containers

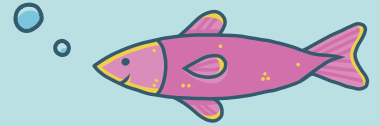
Activity 4: Extant or Extinct?



○ Photo by [Stephen Pedersen](#)
○ on [Unsplash](#)

Learn about Montana's past and present aquatic animals!

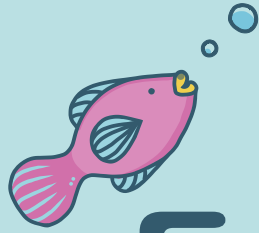
- Lay out the animal models and the Western Interior Seaway map
- Go through the Extant or Extinct cards – guess which animals are which!
- What are the adaptations of each animal? What about these adaptations made it possible for them to stick around until now? Where can you find them in Montana?
- For the extinct animals, why do you think they were not able to survive? Where can you find their fossils?
- Pass around the Ocean Fossils kit, please handle with care



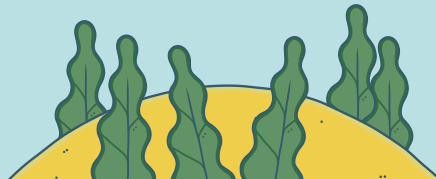
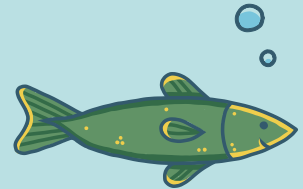
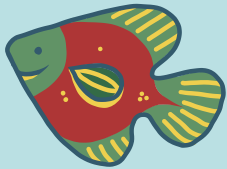
Supplies Provided

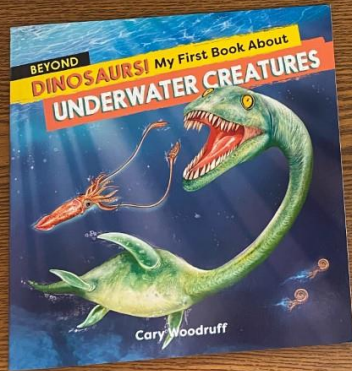
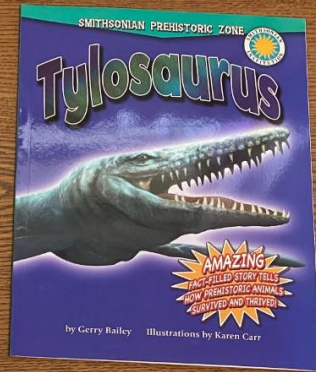
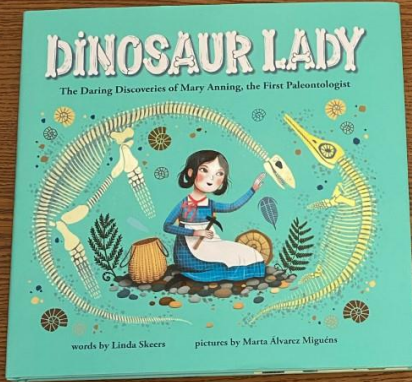
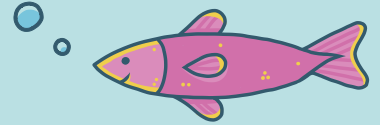
- Extant or Extinct Laminated Animal Cards
- 6 toy animal models
- Laminated map of Western Interior Seaway
- Ocean Fossils Box





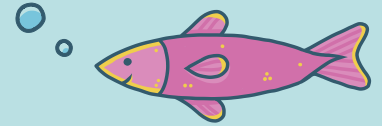
Supplemental Trunk Stuff!





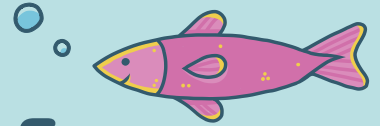
Books and DVD

- You may already have tons of dinosaur books/animal books, but we wanted to provide some just in case not!



- These may seem zoomed in, but they are at-scale! Paddlefish rostrums are BIG!

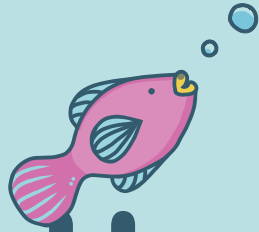
Paddlefish Rostrum Pictures



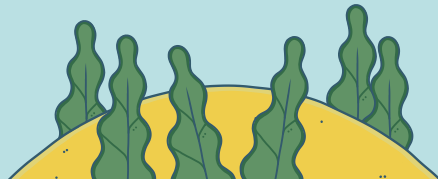
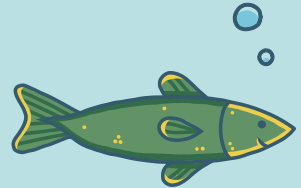
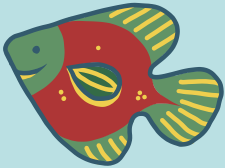
Fish of Montana Poster Set

- 5 different posters, of each fish family!
- You can request a set of your own to keep at your library





How to Request the Trunk



Trunk Request Form

* Required

1. What is your name? *

Ex: Aretha Franklin

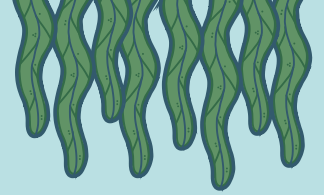
2. What organization are you affiliated with? *

3. What is your organization's official mailing address? (No PO boxes as they are not valid in the FedEx delivery system) *

4. What is the best phone number to reach you at? *

5. What is the best email to reach you at? *

- Only one copy of the trunk available
- Submit request by May 13th
- Priority given to requests with multiple organization/entity involvement
- Shipping covered by MSL
- Borrowing requests limited to 10 days, although more time may be given for multiple org uses



Trunk Use Requirements



Please take a few minutes for this brief survey and let us know if, as a result of participating in the Summer Reading Trunk activity

1. You learned something that is helpful

Strongly Disagree Disagree Neither Agree Strongly Agree N/A

2. You feel more confident about what you just learned

Strongly Disagree Disagree Neither Agree Strongly Agree N/A

3. You intend to apply what you just learned

Strongly Disagree Disagree Neither Agree Strongly Agree N/A

4. You are more aware of resources and services provided by the library

Strongly Disagree Disagree Neither Agree Strongly Agree N/A

5. What did you like most about the program?

6. What could the library do to better assist you in learning more?

- Please pack up the trunk, and print/tape the shipping label!
- Project Outcome Surveys – please hand out to your patrons
- Please inventory the trunk when you receive it to make sure nothing is missing!



Questions?

Contact: akim@mt.gov

[Trunk Request Form Link](#)
[2022 Summer Reading Website](#)

CREDITS: This presentation template was created by **Slidesgo**, including icons by **Flaticon** and infographics & images by **Freepik**

