

MSDI Land Cover Updates

Montana State Library Commission Meeting
June 9th, 2021



Montana Land Information Plan

State FY 2020-2021

MSDI Land Cover Priorities

- a. Convene a land cover working group to identify partner needs and develop a plan for comprehensive revisions to the current MSDI Land Cover theme.
- b. Provide an interim Land Cover basemap that follows existing methods and takes advantage of new ecological systems mapping available for Montana through the GAP/LANDFIRE program.
- c. Perform a preliminary evaluation of the interim Land Cover basemap

Tier 2 Priorities: Development of geographic information systems that support on-going government workflows and build GIS capacity



Montana Land Information Plan

State FY 2020-2021

Montana Land Cover 2020

[Montana Land Cover StoryMap](#)

- Introduction
- History & Current Status
- Mapping Units & Legend
- Working Group
- Montana Land Cover 2020
- Enduser Input

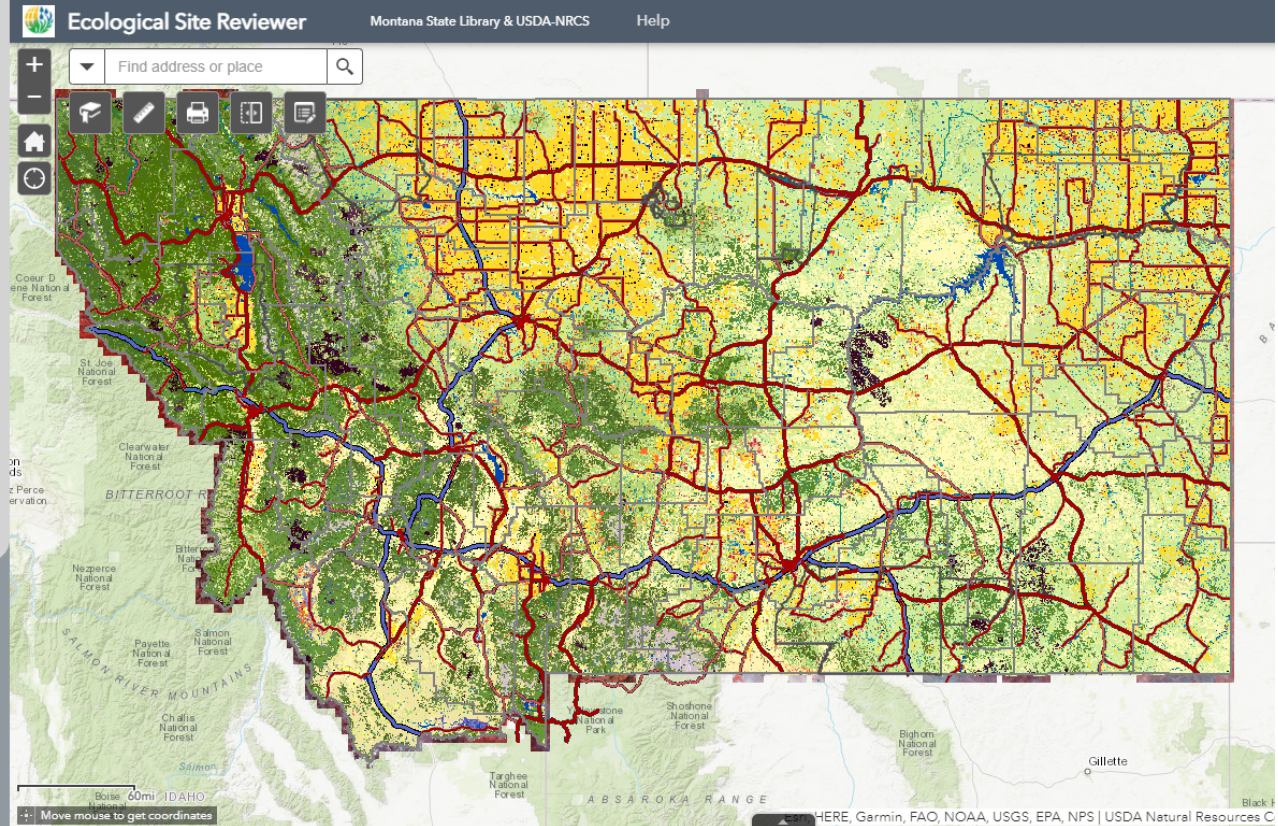
This section outlines a step-wise approach for supporting the Montana Land Cover 2020 data.

1. SAL will work with the LCWG to identify ecological reviewers and develop a review schedule to evaluate the Montana Land Cover 2020 dataset using an approach that is organized by geographical boundaries (e.g., 8-digit HUCs; ecoregions).
2. SAL will continue its process of a class-by-class assessment of the LF EVT mapping accuracy and sequentially identify corrections and improvements determined necessary.
3. When conducting land cover mapping assessments, reviewers are encouraged to use displays of the LF products and other supporting environmental data in the [Ecological Site Reviewer \(ESR\)](#) online map application (shown here). A [detailed help document](#) for using the ESR is provided here. Reviewers may also download custom geodatabases with the LF products and other relevant environmental data from the [HUC Environment](#) support site for desktop GIS access layers that could be useful in the review process.
4. Additional supporting information for LC reviewers and data users is available as georeferenced photos of ground reference data in the [Natural Heritage Map Viewer Georeferenced Photos](#) task and in [historical georeferenced photos from the University of Montana's Mansfield Library](#).
5. Reviewers are encouraged to provide their proposed LC mapping revisions using [Ecological Site Reviewer](#).
6. Proposed revisions will be assessed by the LCWG and specialized subgroups prior to incorporation into the Montana Land Cover 2020 dataset. Updates and revisions will be made on a schedule to be determined by the SAL in coordination with the LCWG.

Throughout this process, compatibility with the NVC system and Montana Field Guides will be maintained.

All SAL Land Cover support activities are dependent on available funding.

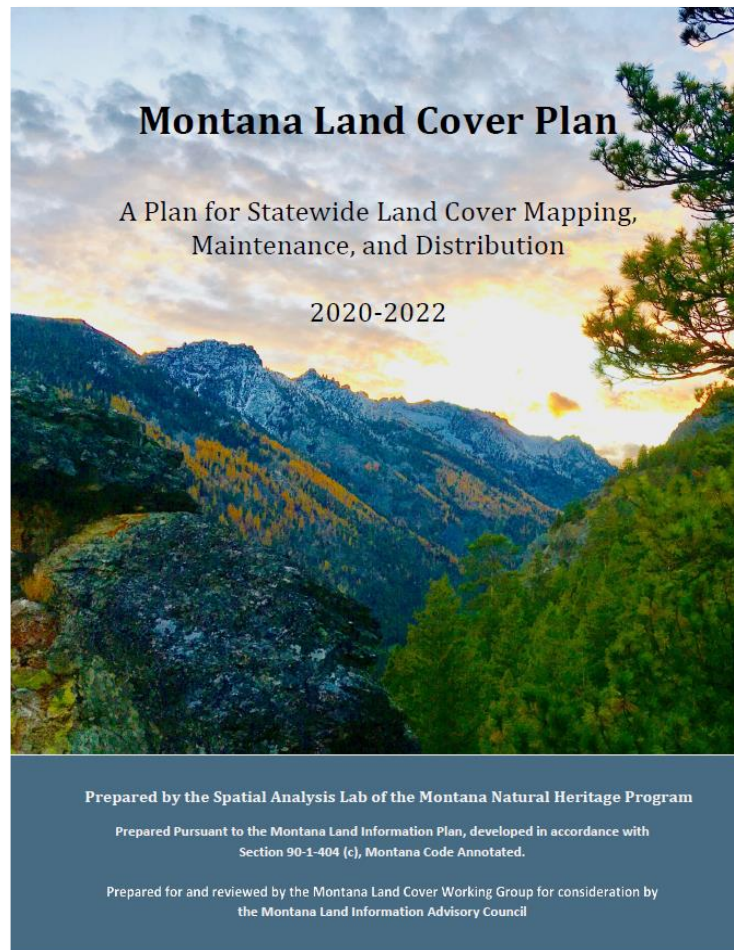
Possible Citizen Science Directions: see ["Why observe land cover?"](#) video from the NASA GLOBE Observer program.



- a. Convene a land cover working group to identify partner needs and develop a plan for comprehensive revisions to the current MSDI Land Cover theme.



Montana Land Information Plan (2020-2022)



- a. Convene a land cover working group to identify partner needs and develop a [plan](#) for comprehensive revisions to the current MSDI Land Cover theme.



Montana Land Information Plan

State FY 2020-2021

SERVICES

AGENCIES

LOGIN

SEARCH MONTANA.GOV



GEOGRAPHIC INFORMATION CLEARINGHOUSE

What are you looking for?

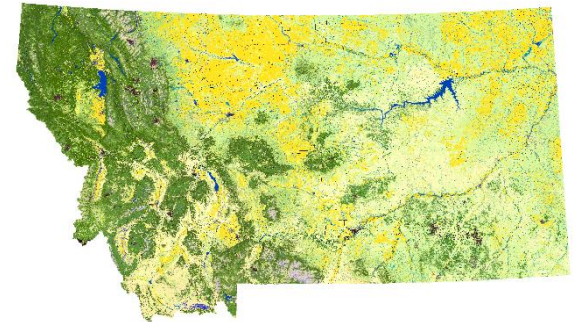
Search

[More Search Options >](#)

Land Use/Land Cover

The Land Cover/Land Use (LCLU) database records all Montana natural vegetation, land cover and land use, classified from satellite and aerial imagery, mapped at a scale of 1:100000, and interpreted with supporting ground-level data.

The Land Use/Land Cover (LULC) Framework records natural biological communities, disturbances (e.g., pests and invasive species, fire), and human activities. Map units are based on an Ecological Systems mid-scale classification adapted for Montana and can be crosswalked to the US National Vegetation Classification.



Data and Documentation

Montana Land Cover Working Group

The Montana Land Cover Working Group invites participation from all users. User input on land cover mapping activities can provide valuable information for enhancing the [preliminary Montana Land Cover \(MTLC\) 2020 dataset](#) that is currently under development. Please see our [Land Cover Story Map](#) for details and current updates.

MSDI Montana Land Use/Land Cover Data

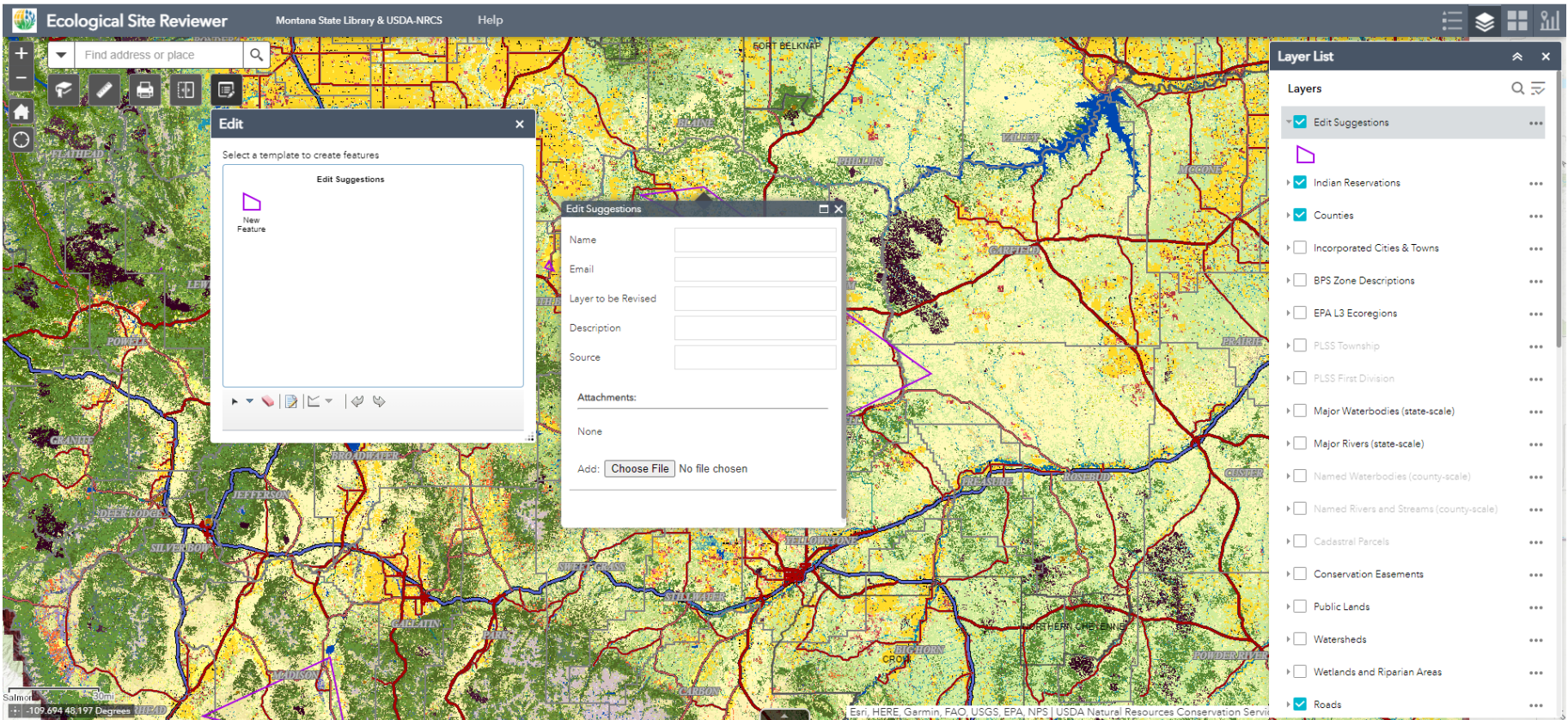
Land Use/Land Cover data are provided for the entire state of Montana as an Esri file geodatabase. The data are stored in the Montana State Plane Coordinate System.

Land Use/Land Cover Framework Web Service

- b. Provide an [interim Land Cover basemap](#) that follows existing methods and takes advantage of new ecological systems mapping available for Montana through the [GAP/LANDFIRE](#) program.



Ecological Site Reviewer

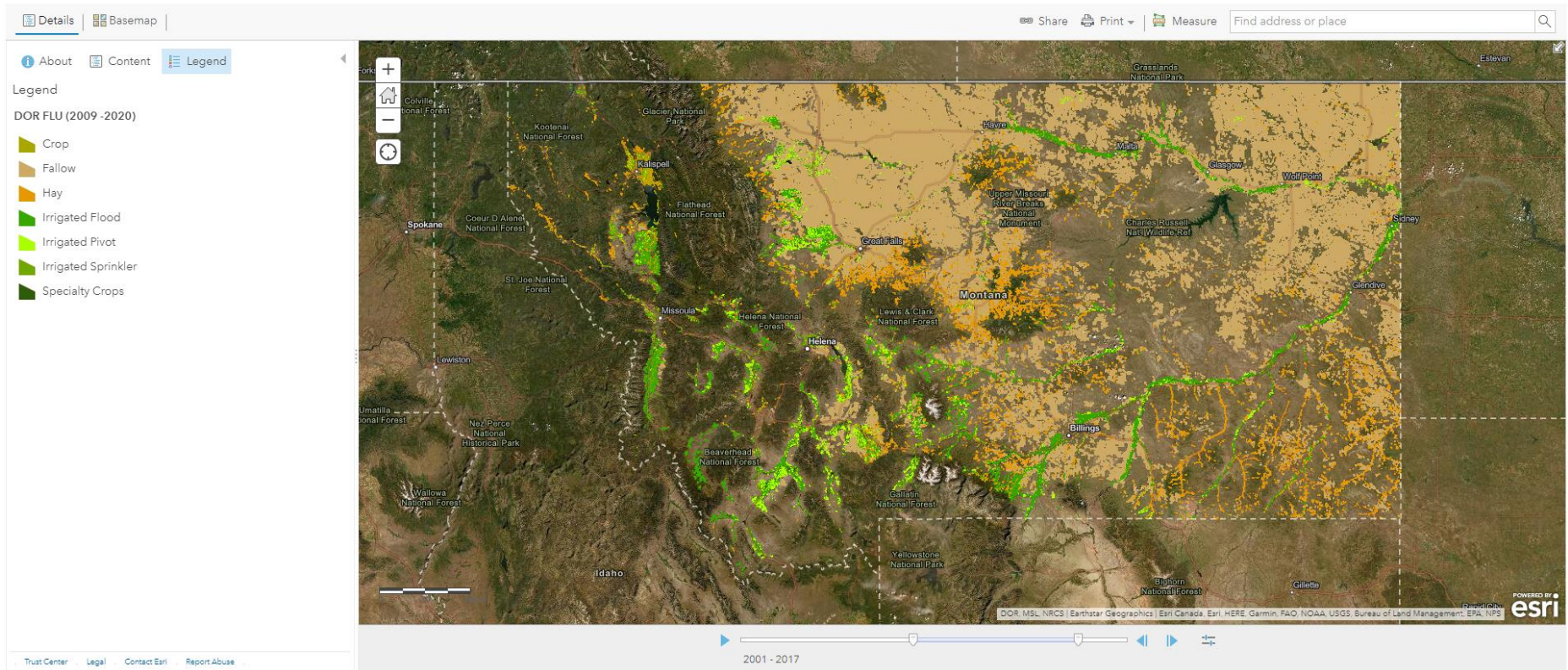


<https://montana.maps.arcgis.com/apps/webappviewer/index.html?id=ee8f63e72e204c4594dd6ccea68749b6>

Landover Timeseries

ArcGIS ▾ Landcover Timeseries

Open in new Map Viewer [Modify Map](#) [Sign In](#)



Agricultural Land Use Change 2009 - 2020

<https://arcg.is/bTyeK>



Montana Land Information Plan

State FY 2021-2022

MSDI Land Cover Priorities

- a. Carry forward activities outlined in the adopted MSDI Land Cover Plan and work to extend the current plan.
- b. Automate Land Cover maintenance and update schedule.
- c. Continue outreach and coordination efforts through the MSDI Land Cover Working Group

