

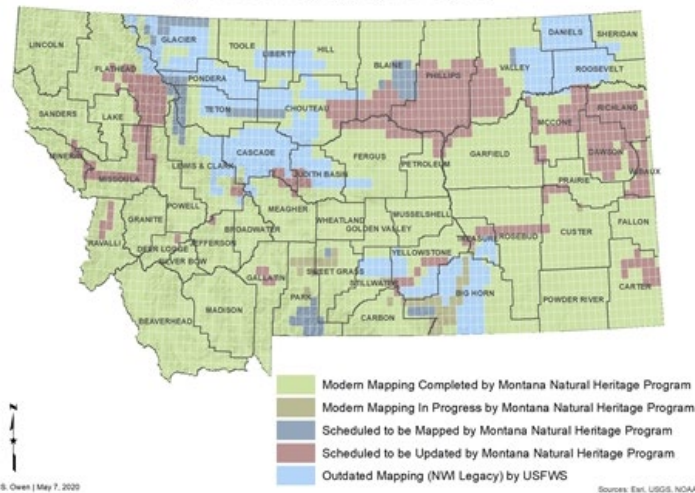
# Wetland Mapping

Montana State Library (\$1,500,000)

## Program Description

To advance recovery from the COVID-19 pandemic, the State of Montana intends to invest significantly in water, sewer, broadband and other infrastructure, and capital investment projects. The Montana Department of Environmental Quality permitting processes for many of these kinds of projects require applicants to submit maps that identify all surface waters, including springs and ephemeral drainages. Maps of this information are readily available for download from the Montana State Library (MSL) Natural Heritage Program for all but 15% of Montana where the wetlands have yet to be mapped. Currently, wetlands are mapped as funding becomes available through grants from state and federal agencies, Montana Tribal Nations, and other entities.

Wetland and Riparian Mapping Status by USGS Topographic Quad



Funding	
Total OTHER ARPA Funds	\$1,500,000
<b>Total</b>	<b>\$1,500,000</b>
Estimated Costs	
Wetland mapping contract (400 quad @ \$3,750 ea.)	\$1,500,000
<b>Total</b>	<b>\$1,500,000</b>

Figure 1: Wetlands mapping status, 2020  
[http://mtnhp.org/nwi/NWI\\_Status\\_map.asp](http://mtnhp.org/nwi/NWI_Status_map.asp)

## Required Resources

With funding, MSL will contract with a qualified GIS program to complete wetlands mapping of 402 quads. MSL will receive the resulting data which will be made available through MSL’s existing data management systems.

## Objectives and Measurable Outcomes

The purpose of this project is to complete wetlands mapping of the remaining 402 USGS quads in Montana yet to be mapped to modern standards to complete statewide wetland mapping coverage. As a result of the COVID-19 pandemic, capital and infrastructure projects were put on hold. With investment through American Rescue Plan act targeted to support projects including water and sewer systems and broadband deployment, rapid completion of wetland mapping will speed permitting, and other infrastructure planning requirements. Ensuring infrastructure projects are shovel-ready puts people to work and helps Montana recover more quickly from the COVID-19 pandemic.